

Spray and touch protection

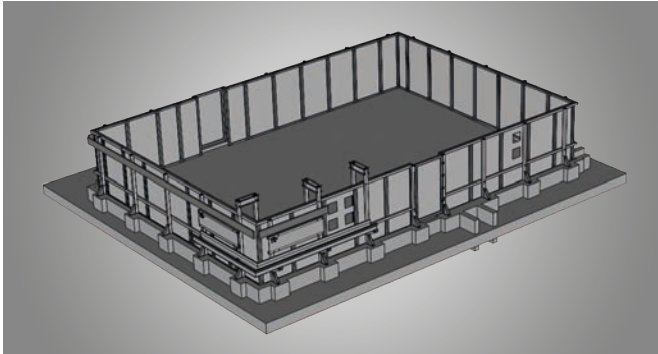
We have already designed and built an array of different spray protection systems for indoor and outdoor use at industrial plants on behalf of our customers.

These traditionally consist of a load-bearing system made of weather-resistant GRP profiles and transparent, weather-resistant plastic panels.

The spray protection system has already been enhanced with e.g. fastener frames for electric distributors, pipe supports, GRP cable bushing systems, GRP doors and ports and special openings for sample extraction.

As the GRP spray protection systems for outdoor use are also exposed to high wind loads, we are happy to provide auditable static analysis from an independent structural engineering firm to confirm their stability.





GRP spray guard for sulphuric acid

This GRP spray guard system has outer dimensions of 11.5 x 8 m and the height of the spray protection walls is 1.7 m. The system is fitted with two doors, sampling points and pipe supports.



Portable spray guard

The spray protection elements can also be designed as portable so that the affected system parts can be reached quickly if repairs are needed.



Solid workmanship

Here is an example of how the individual parts of the GRP frames are connected to each other. An internal GRP core with screw threads ensures a high level of stability.



Handles

Ergonomic handles ensure easy transportation of the GRP splash guard.



Variable

We can accommodate a wide variety of geometric requests and requirements from customers for a GRP spray protection system.



Packing & assembly

We pack your products so that they will arrive safely at the construction site. Our in-house assembly team can handle installation on site upon request. If adjustments are then required, these can be made quickly there and then.

Where other materials meet their match.

Solutions based on fibre composite materials have been successfully used in the chemical industry, plant engineering and various other sectors for many decades. Fibre composite materials are much lighter than metals and do not rust. They are weather-resistant and do not conduct electricity. In addition, they are resistant to many chemicals.

GRP in the chemical industry:

- Resistant in corrosive environments
- Can be machined and installed without flying sparks
- Weather-resistant
- Low thermal conductivity
- Electrically insulating
- Very strong but lightweight
- Economical to transport and handle
- Easy to adjust on site



Customised solutions

Do you need a customised solution? Then you've come to the right place. Whether you need a special design for the chemical industry or series production, let's think through the task together.

Verifiable structural analysis

We have already conducted structural analysis of many of our designs. If you have a special requirement, we will be happy to also provide structural analysis for your design, calculated by an independent structural engineering firm.

Delivery and assembly on site

In addition to delivery, our experienced assembly team can also perform installation on site.

Techno-Composites Domine GmbH

Dieselstraße 34 | 49716 Meppen | Germany
T +49 5931 99748-0 | info@techno-composites.de

TECHNO-COMPOSITES.DE